

A dynamic, high-speed photograph of water splashing upwards, creating a central column of water with many smaller droplets and bubbles around it. The water is a deep blue color, and the background is a lighter, hazy blue.

Water-born pure Inorganic Coating Agent

AD-Tech COAT

JPN, USA Patent filed

Aimed at Only-One product with the original technology, this is the new material that respects human and the earth, and active by being environmentally friendly, safe, energy-saving, and by recycling – which has been developed due to strain of the real-life orientation over the Water-born Pure Inorganic.

Trade Service Corporation

Thinking of the Earth's future with the Carbon-free Nano-technology

Patent filed Water-born pure Inorganic Coating Agent

AD-Tech COAT

Patent filed in Japan and the United States

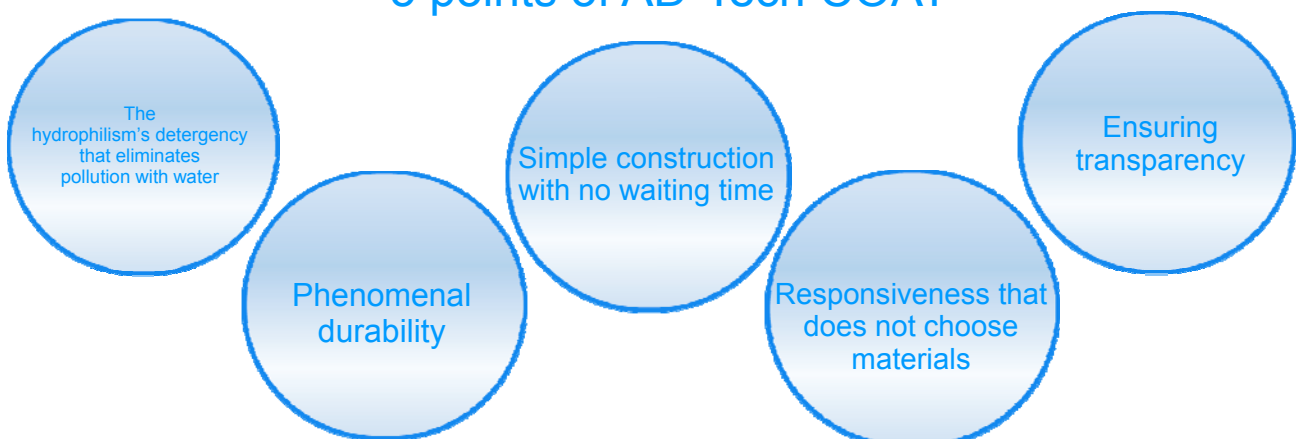
High level of antifouling, eco-friendliness and durability has been found by Pure Inorganic material that has Silicon dioxide and water as the base.

It is the method of coating that started from Japan, where there is a safety of [carbon-free] that doesn't include organics (oil-related substance), the [VOC Free (volatile compounds)], and the incombustibility (proved from the Japan railcar combustion test).



Water-born pure Inorganic Coating Agent	Solvent by water (VOC Free)
Nano-membrane	Approx. more less 50nm Ultra-thin, hundreds of textures in 1μm ²
Carbon-free	There is no degradation, discoloration, or fading of the liquid -applied membrane caused by UV rays.
Super-hydrophilic, high transparency	Anti-fouling prevention, simple detergency, improvement of transparency
Environment, conserving resources, safety	Because VOC is not included, there is a reduction of water and detergent usage.

~5 points of AD-Tech COAT~



The hydrophilism's detergency that eliminates pollution with water



Antifouling



Hydrophilic

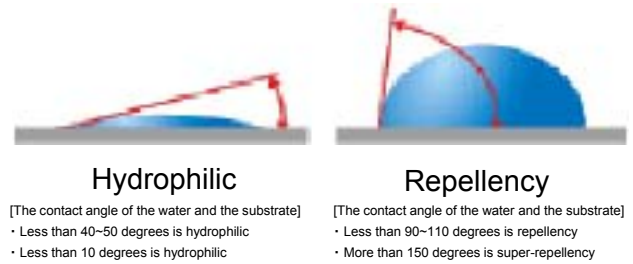


Energy-saving

What is hydrophilism?

Generally, when the contact angle of the water and the substrate is less than 50 degrees, we call it as hydrophilic. If less than 10 degrees, we call it as super-hydrophilic.

*The contact angle changes depending on the condition of substrate's surface.



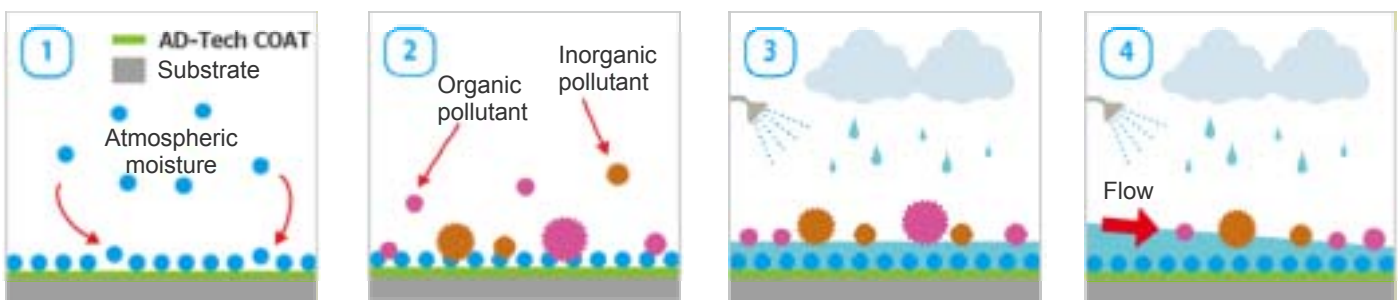
Advantages of hydrophilic

- We can earn **self-cleaning effect** by eliminating the pollution through rain or showers.
- Water drops are not left on the surface; therefore we can prevent the **water-spot that has been caused by the lens effect**.
- **The grease can be washed away with water.**



The mechanism of anti-fouling

There are very tiny texture on the surface of membrane after coating is done, and this membrane has a function of **moisture absorption from atmosphere**. The pollution sticks onto the convex of the texture. the concave parts have membranes that contain atmospheric moisture. If water is poured at that part, the pollution on the membrane flow out due to the added water. The **pollution on the convex parts will be cleaned**. In addition, the membranes has **an anti-static effect because** membrane has always wet by moisture.



- 1 The function starts to work right after the application on the target substrate, and forms water membrane by applying atmospheric moisture onto the surface.
- 2 The surface of the substrate is covered with the water membrane, so even if the pollutants come across, they will be floating on the water membranes.
- 3 If the water reaches the surface, it will stay with the pollutants below, and the water will become excited.
- 4 If the water reaches the surface, the pollutants will wash down together with the water.

(If there is more slope on the substrate, better results will be earned)

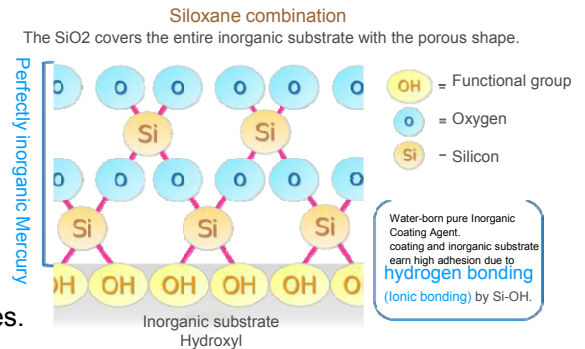
Phenomenal Durability



Because the Water-born pure Inorganic Coating Agent AD-Tech COAT that is based on water and **Silicon dioxide** never includes compounds that cause degradation due to the UV rays, unless the foundation becomes deterioration, the coating will be maintained.

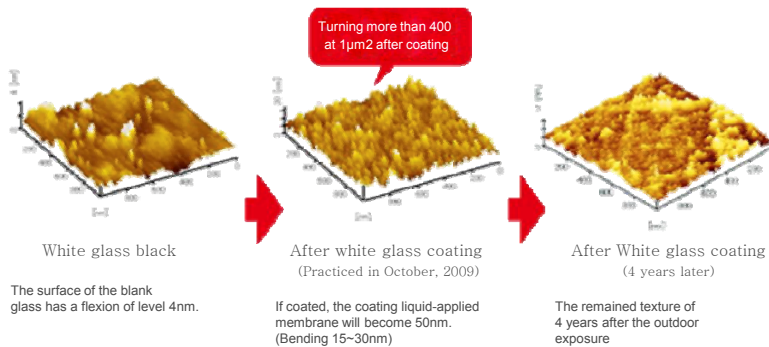
Also, because it is firmly cohered through the bonding of inorganic substrate and hydrogen, the **coating will not be hardened**, but will show excellent flexibility due to the **Siloxane bond**. It will also become strong for the friction caused by **the washings**, and the membrane will not come off when there are brushings done by car wash machines.

Not only this, but it will become stronger in delamination, because the moistures are held and the coefficient of friction reduces.



Exposure test

Measured at Osaka University Nano-Foundry
Scanning probe microscope (S II system, SP I 13800N)



Membrane sliding & friction test

Substrate: AGC made glass 50mm x 50mm x 5t
Device: KATOHTEK product
Wear & Friction testing: DHK-SL16

- Weight 300g
- Rev count 60.0r/min
- Retrieval 1000 round trip (sliding 2000 times)
- Sliding width 40mm
- Friction materials - non-woven fabric
- Non-woven fabric surface 6 cm²
- Friction surface 10m²



Simple work with no waiting time



Skills and equipment

After applying, you only wipe it out.
No other special techniques are needed. Anyone can make it easily.
No special machineries or equipment are needed as well.
You can do it with the tools you have.

Time

Because it is a **one-component liquid**, no preparations are needed.
You can start right away.
Also, you can do it in **short time** with ultra-thinness.
Moreover, since it is based on room temperature and is quick drying, **you don't have to wait for it to dry** after work.

Smell

There are no volatiles; therefore it is odorless and non-toxic.
You can relieve and work.



Responsiveness that does not choose materials



AD-Tech COAT is Water-born pure Inorganic Coating Agent,
so the solvent **only needs water (VOC Free)**.
It can be applied to any materials that do not choose any substrate.
(Except paper .cloth, green wood and concrete structure))

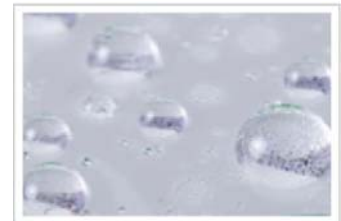


Metal-based substrate	Stainless, Aluminum, Magnesium, etc.
Resin-based substrate	Plastic, Film surface, FRP, etc.
Organic substrate	Painted surface, Lacquer surface finish, etc.
Inorganic substrate	Glass, marble, pottery like tile, sanitary ware etc.

Ensuring Transparency



The silica's(Silicon dioxide) light refractive index (1.45) is lower than
the glass's light refractive index (1.52), the light's transparency
does not degrade, but may be expected to be improved.



~The reason why AD-Tech COAT was **CHOSEN**~

Room temperature / Quick-drying	After applying, there is no need for drying time! The effect will be seen right after.
One-component liquid	No need to prepare for applying! You can use it right away.
Needless consideration during processingclimate	No effects of humidity and temperature! *Please avoid sultriness and temperature below 0 degrees.
Can relieve and process because there are no odors	No volatile compounds! You can relieve and work.
No problem in case of interruption during the process	No marks after application! You don't have to care about it.
No need for special machines	No capital investment! You can apply by using existing tools.
Anyone can easily process	No special skills needed! You can apply very easily.
Improve work efficiency with ultra-thinness	No need for overlapping! You can shorten the work time.
High safety	No organic components! Silica and water are the main components that are perfectly inorganic.

Case Studies

Solar Panels



Measures to the pollution on the solar panels
(Prevention of reduction of generating efficiency)...

Cars



Measures to the water spot and the pollution of the cars...

Public Vehicles



To make the cleaning process of the public vehicles
(railcars, buses) easier...

Stainless



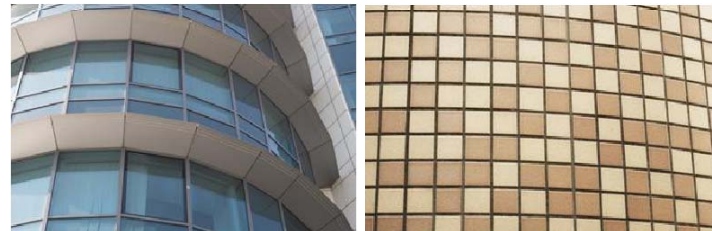
Measures to the fingerprints and pollutions on the stainless
of elevators and kitchens...

Bathrooms & Kitchens



Measures to the odors and pollutions
of the toilet and the washstand...

Outer walls and Glasses



Measures to the pollutions of the outer walls such
as general houses, buildings, shops, etc...

It is active in many different places.

- Measures to the electrostatic charge of the office equipment
(scanner, computer, fax, etc.)
- Measures to the fingerprints and pollutions of the small products
such as cellphones, game equipment, tablet PC, etc.
- Measures to the odors and pollutions of the hotels' smoking rooms.
- Shorter cleaning time for restaurants, convenience stores and snacks.
- Shorter cleaning time for building maintenances, glass showcases, etc.

You can use it in wide range of sectors.



Product List

AD-Tech COAT K-1006v

Liquid : Type

Purpose : Stainless, glass, mirror, solar power covering glass, etc.

AD-Tech COAT K-1006CP05

Type : A liquid that contains a compound (eliminate pollution + coating)

Purpose : Stainless, glass, mirror, solar power covering glass, bathroom mirrors, bath tubs, toiletries (earthenware), kitchen sinks, artificial marbles, IH glass tower, gas appliances toilet, wall tiles.

AD-Tech COAT K-1006UV05 (K-1006CP05 High durability models)

Type : A liquid that contains a compound (eliminate pollution + coating)

Purpose : Stainless, glass, mirror, solar power covering glass, bathroom mirrors, bath tubs, toiletries (earthenware), kitchen sinks, artificial marbles, IH glass tower, gas appliances toilet, wall tiles.

AD-Tech COAT K-1006KP50

Type : Gel (Viscosity:Medium)

Purpose : Organic coating (Car-body, etc.), organic substrate, ALC surface coating, siding board, concrete surface, cloth for tent, acrylic, polycarboxylic, artificial leather goods, furniture, piano, glass, toilet, etc.

AD-Tech COAT K-504PAK50

Type : Gel(Viscosity;Soft)

Purpose : Car, railcar, cellphone, smartphone, tablet device, game equipment, glass, mirror, glasses.

AD-Tech COAT DC-2202UV73

Type : Liquid

Purpose : A two-component over coating for cars & Stainless steel over coat.



Liquid type



The type that has a compound



Gel type

For others, we suggest and provide the best type based on the objectives and the substrates.

AD-Tech GUARD SAP-101

A chemical that keeps the flames from spreading onto combustible materials such as plastic, rubber, fiber, paper, and wood.

This chemical was used once on the subway sleeper sand etc.





Computer Store

Trade Service Corporation

Code 532-0002

10-5,6Chome,Higashimikuni,
Yodogawa-ku, Osaka, Japan

TEL :+81-6-6392-1313

FAX :+81-6-6392-1403

<http://www.ts-corp.biz>